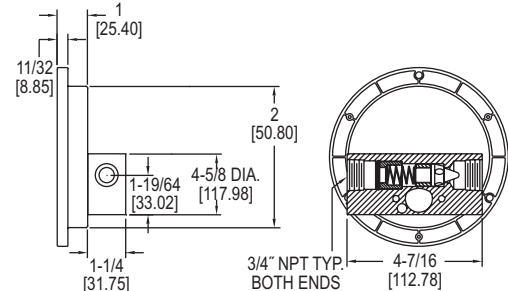
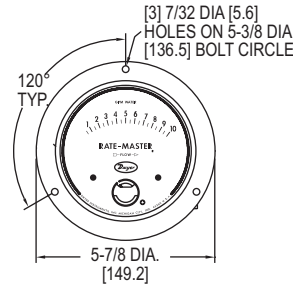


SERIES RMVII

RATE-MASTER® DIAL-TYPE FLOWMETER

For Panel Mounting, Three Ranges to 10 GPM Water, High Pressure Limits



*FITS IN ANSI STANDARD 4.940 [125.5] PANEL CUTOUT

The **Series RMVII Rate-Master® Dial-Type Flowmeter** consists of a machined brass meter body which is ideally suited for water flows with $\pm 5\%$ of full-scale accuracy. Body design fits standard 4-1/2" mounting hole layouts per ANSI B40.1. Inlet and outlet threads are standard 3/4" female NPT.

FEATURES/BENEFITS

- Unique construction fully isolates flowing media from gage front for leak-proof operation at pressures up to 3000 psig (206.7 bar)
- Target-type design combined with a damage resistant magnetic linkage, drive a pointer over easy-to-read litho scale
- Shatter proof construction, unlike glass tube variable area flowmeters, yields long operation life

APPLICATIONS

- Monitor coolant flow through ingot heaters, high-amp switchgear, resistance welders, heat exchangers, compressors, scrubbers
- Monitor water consumption to different processes and operations for more efficient operations
- Calculate required fill or drain times for tanks, water towers

OPTIONS	
To order add suffix:	Description
-NIST	NIST traceable calibration certificate
Example: RMVII-1-NIST	

SPECIFICATIONS

Service: Compatible gases, liquids and oils.

Wetted Materials: Brass, 302 SS, sintered barium ferrite, polyacetyl.

Temperature Limit: 200°F (93°C).

Pressure Limit: 3000 psig (206 bar).

Pressure Drop: 0 to 5 GPM: 3.2 psid;
0 to 10 GPM: 5.3 psid; 0 to 20 GPM:
10.4 psid.

Accuracy: $\pm 5\%$ of FS.

Size: Diameter dial face 4.5" (114.3 mm).

Process Connections: 3/4" female NPT.

Weight: 2 lb, 14 oz (1.3 kg).

MODEL CHART

Model	Range GPM Water	Range SCFM	Range LPM Air	Range GPM Oil	Range LPM Oil
RMVII-1	0 to 3	-	-	-	-
RMVII-3	0 to 5	-	-	-	-
RMVII-6	0 to 10	-	-	-	-
RMVII-10	-	0 to 10	0 to 280	-	-
RMVII-12	-	0 to 30	0 to 850	-	-
RMVII-14	-	0 to 50	0 to 1400	-	-
RMVII-20	-	-	-	0 to 2.2	0 to 8
RMVII-21	-	-	-	0 to 4.0	0 to 15
RMVII-22	-	-	-	0 to 8.5	0 to 32

USA: California Proposition 65

⚠WARNING: Cancer and Reproductive Harm - www.P65Warnings.ca.gov