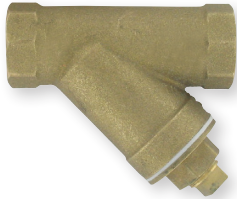


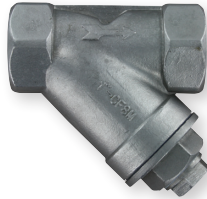
# BRASS OR STAINLESS STEEL Y-STRAINERS

Cost Effective, Excellent Filtration, High Flow

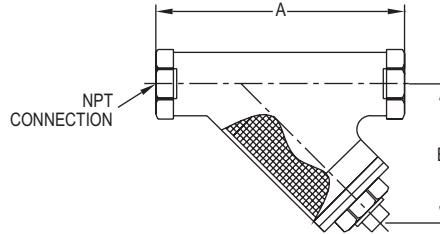
Valves,  
Globe



BYS ++



SYS



BYS DIMENSIONS		
NPT Size	A in [mm]	B in [mm]
1/4"	1-31/32 [50.04]	2-11/16 [68.07]
3/8"	1-31/32 [50.04]	2-11/16 [68.07]
1/2"	1-31/32 [50.04]	2-11/16 [68.07]
3/4"	2-23/64 [59.94]	3-59/64 [99.57]
1"	2-41/64 [67.06]	4-17/32 [115.06]
1-1/4"	3-3/16 [81.03]	5-25/64 [136.91]
1-1/2"	3-7/16 [87.12]	6-17/64 [159.00]
2"	4-19/64 [108.97]	7-31/64 [189.99]

SYS DIMENSIONS		
NPT Size	A in [mm]	B in [mm]
1/4"	2-33/64 [64.00]	1-27/32 [46.99]
3/8"	2-33/64 [64.00]	1-27/32 [46.99]
1/2"	2-33/64 [64.00]	1-27/32 [46.99]
3/4"	3-1/16 [78.00]	2-15/64 [56.90]
1"	3-35/64 [90.00]	2-41/64 [67.06]
1-1/4"	4-11/64 [106.00]	2-53/64 [71.88]
1-1/2"	4-11/16 [119.00]	3-5/32 [80.01]
2"	5-33/64 [140.00]	3-21/32 [92.96]

The Series BYS & SYS Brass or Stainless Steel Y-Strainers are a cost effective option for use in any type of industrial application. Versatile Y configuration and availability in a wide range of sizes allow for many different uses. Body, cap, and plug are made from either a high quality brass or stainless steel to ensure reliability. The seal is constructed of PTFE to ensure long service life. The stainless steel strainer provides excellent filtration to help prevent damage to valves, meters, etc. from rust and dirt, without sacrificing high flow characteristics.

## FEATURES/BENEFITS

- Cost effective
- Stainless steel strainer

## APPLICATIONS

- Ideal for installations upstream to protect pumps, control valves, regulators, etc from rust, pipe scale dirt

## SPECIFICATIONS

**Service:** Gases, steam and liquids compatible with wetted materials.

**End Connections:** Female NPT.

**Pressure Limits:** See model chart.

**Temperature Limits:** -10 to 250°F (-23 to 121°C).

**Wetted Materials:** BYS: Valve Body: Cast brass; Cap and plug: Brass; Screen: SS;

Seal: PTFE; SYS: Valve body and cap: Cast 316 SS (CF8M); Plug and screen: 316 SS; Seal: PTFE.

## MODEL CHART

Model	Pipe Size	Max. Pressure	Model	Pipe Size	Max. Pressure
BYS-00	1/4"	400 psi (27.6 bar)	SYS-00	1/4"	800 psi (55.2 bar)
BYS-01	3/8"	400 psi (27.6 bar)	SYS-01	3/8"	800 psi (55.2 bar)
BYS-02	1/2"	400 psi (27.6 bar)	SYS-02	1/2"	800 psi (55.2 bar)
BYS-03	3/4"	400 psi (27.6 bar)	SYS-03	3/4"	800 psi (55.2 bar)
BYS-04	1"	300 psi (20.7 bar)	SYS-04	1"	800 psi (55.2 bar)
BYS-05	1-1/4"	300 psi (20.7 bar)	SYS-05	1-1/4"	800 psi (55.2 bar)
BYS-06	1-1/2"	300 psi (20.7 bar)	SYS-06	1-1/2"	800 psi (55.2 bar)
BYS-07	2"	300 psi (20.7 bar)	SYS-07	2"	800 psi (55.2 bar)

++USA: California Proposition 65

⚠WARNING: Cancer and Reproductive Harm - [www.P65Warnings.ca.gov](http://www.P65Warnings.ca.gov)