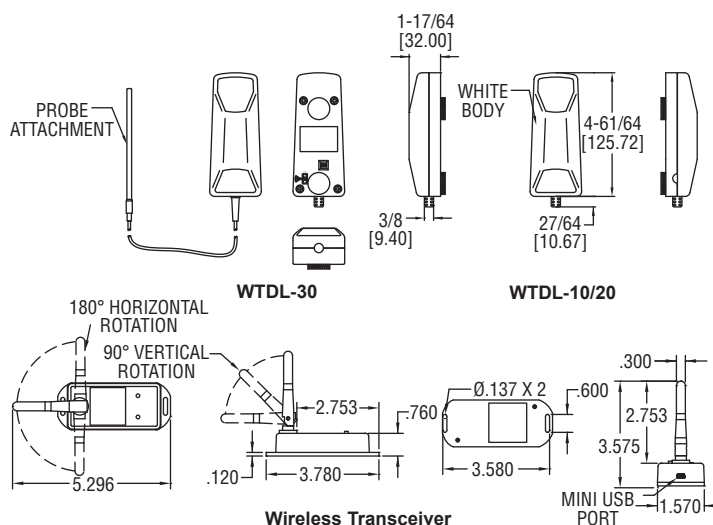




Series WTDL Wireless Temperature/Humidity Data Logger

Specifications - Installation and Operating Instructions



The Series WTDL Temperature/Humidity Data Logger is perfect for applications which require real time monitoring, or in areas that are not as accessible to periodically retrieve the loggers. The data loggers can transmit up to 500 feet indoors and up to 2000 feet outdoors. The distance can be increased by using additional receivers. Wireless data is transmitted on a 2.4 GHz frequency allowing it to be used anywhere in the world. A network of data loggers can be separated into a smaller subnet. These subnets can all be controlled by a single PC. The Series WTDL data loggers also feature a user programmable alarm. This alarm can be configured to show an on screen alarm, send a text message (standard SMS rates apply) or an email if an alarm condition is met.

SOFTWARE INSTALLATION

1. Insert installation software and click install Dwyer 2.00.



Figure 1: Software/Driver Installer

2. Follow on screen instructions.
3. Next, click on the Install USB Interface Drivers on the CD contents screen.
4. Click Install.
5. Next, click on Install RFLogNET on the CD contents screen.
6. Click Install.

SPECIFICATIONS

Temperature Range: WTDL-10/WTDL-20: -4 to 176°F (-20 to 80°C); WTDL-30: -328 to 500°F (-200°C TO 260°C) for probe.

Humidity Range: WTDL-20: 0 to 95% RH.

Temperature Accuracy: WTDL-10/WTDL-20: 0.9°F (0.5°C) from 32 to 122°F (0 to 50°C); WTDL-30: 0.18°F (0.1°C) from -4 to 176°F (-20 to 80°C), 0.9°F (0.5°C) outside of specified range.

Humidity Accuracy: WTDL-20: ±3.0% RH, ±2% typical at 77°F (25°C).

Temperature Resolution: 0.018°F (0.01°C).

Humidity Resolution: WTDL-20 only: 0.1% RH.

RF Carrier Frequency: 2.45 GHz.

Band: ISM band 2.405-2.48 GHz.

Maximum Power Output: +0 dBm typical.

Wireless Transmission Range: 2000' (610 m) outdoors, line of sight; 500' (152 m) indoors.

Receiver Sensitivity: -95 dBm typical.

Memory Size: WTDL-10/WTDL-30: 30,000 Readings; WTDL-20: 15,000 readings per channel, software configurable memory wrap.

Sampling Method: Stop on memory full or continuous recording.

Sampling Rate: 2 sec to 24 hrs.

Temperature Limits: -4 to 176°F (-20 to 80°C).

Humidity Limits: 0 to 95% RH.

Computer Requirements: Windows® Xp Sp3, Windows Vista®, Windows® 7.

Computer Interface: WTDL-RX.

Power Requirements: 3.6 V TL-5104 lithium metal battery, installed functional, user replaceable.

Battery Life: 2 years (approx.).

Housing Material: ABS plastic.

Weight: 0.25 lb (113.4 g).

FCC Approval: FCC ID# OA3MRF24J40MA.

Agency Approvals: CE.

Windows® and Windows Vista® are registered trademarks of Microsoft Corporation

CONNECTING THE DATA LOGGER

1. Plug the receiver into the USB port on the computer.
2. Plug additional receivers into the wall using the AC adapter.
3. Turn the data logger on.
4. A WTDL icon will automatically appear in the software showing the device is recognized.



Figure 1: Backside of data logger showing power switch (0 is off, 1 is on)

NOTICE The WTDL-RX can transmit up to 2000' outdoors and 500' indoors. If the distance is greater than 500' indoors or 2000' outdoors, or there are obstacles that need to be maneuvered around, setup additional WTDL-RX receivers as needed.

STARTING THE DEVICE

1. Highlight the device in the RFLogNET software.
2. Click the Claim Icon.
3. Click the Start button.

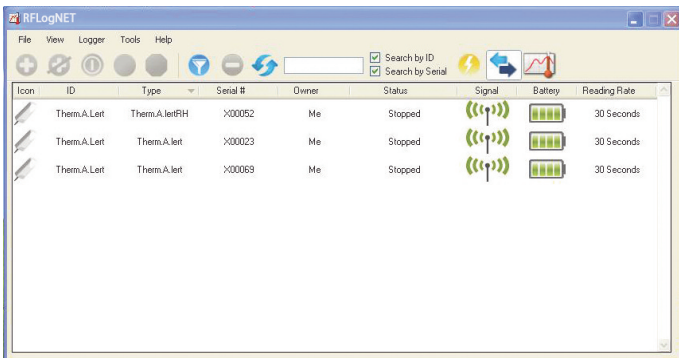
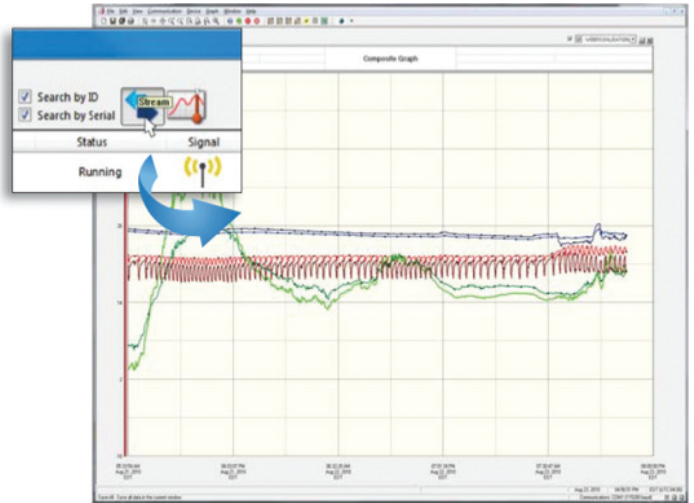


Figure 2: RFLogNet Data Logger Configurator

4. To view data in real time, click the Stream button on the RFLogNET window.
5. A Dwyer graphing software window will open up showing real time data from the device.



**For more information on using the WTDL-RX software, please consult the software manual found on the CD.

BATTERY

The battery is user replaceable and has a typical battery life of 2 years. To replace the battery, remove the backside of the data logger and take the battery out. Replace the backside of the data logger. Shorter sample rates will considerably shorten the battery life. To preserve battery life, it is recommended to use the longest practical sampling rate, and when the logger is not in use, turn the logger off.

MAINTENANCE/REPAIR

Upon final installation of the Series WTDL, no routine maintenance is required. The Series WTDL is not field serviceable and should be returned if repair is needed. Field repair should not be attempted and may void warranty.

WARRANTY/RETURN

Refer to "Terms and Conditions of Sales" in our catalog and on our website. Contact customer service to receive a Return Goods Authorization number before shipping the product back for repair. Be sure to include a brief description of the problem plus any additional application notes.